



# Churchfield Community Association

The newsletter of the Churchfield Community Association (CCA) Issue 51, Winter 2020



The Churchfield Community Association welcomes people living and working around Churchfield Road who are interested in making a difference to our area

## Saturday market success!

Press release, MarketW3

Acton's new Saturday market, which launched on October 3rd, supports creativity and funds community schemes.

MarketW3 is a bohemian market, initiated by the local charity Action West London (AWL). Profits will be used to help fund projects to assist disadvantaged young people and adults in the area. AWL aims to boost their chances of getting into employment, education, and enterprise.

A number of local businesses and creatives (including Kal Di Paola of Knneted Marketing, Massimo Di Paola of Social By Max, Tony Bonaventura of Arthur Razor and Jewel Goody of JG Contemporary) are keen to help drive the new direction and to put food, fashion, art, music and community centre stage.



A weekly destination for West Londoners

On a rainy launch day, MarketW3 welcomed members of the community who arrived in droves to support the new venture. A bold street art mural, funded by Acton Unframed, went up during the second week to celebrate the opening.

Market curator, Kal Di Paola, said, 'Acton is a creative and diverse community. We want to go back to what markets used to be about in the days of the old Portobello, when everything was made by creatives and locals. People would go there to hang out and listen to music.'

'MarketW3 has the potential to become a creative hub in West London. We hope this new initiative will inspire entrepreneurship, and support the community to thrive together during these difficult times.'

'Local is the focus. We want to develop the market into an avant-garde hangout for West Londoners. It's not intended for a selective audience, but as a community market that everyone can enjoy.'

The market will be open weekly at The Mount, Acton between 9:30am and 3pm.



## Bring our neighbourhood together

Acton Notebook W3

The clocks have gone back, and mornings and evenings are getting darker as we head into an uncertain winter.

We need something to bring our neighbourhood together, to brighten the grey winter days: to combat the gloom of Covid and the mixed feelings about LTNs (Low Traffic Neighbourhoods).

There's a campaign running to 'Light Up Acton'. The idea has been borrowed from an initiative set up by a neighbourhood in South West London.

People are asked to put up lights outside their homes, shops and offices, to help cheer up the whole area. Energy and cost-efficient solar lights are encouraged.

This is an easy way for us to come together positively with our neighbours. It will brighten the journey for our children on the way home from school, and it is an opportunity to check up on our elderly neighbours.

Join us to 'Light up Acton'!

## A shot in the arm for Acton?

Doug Carnegie (Trustee, Acton Arts Project)

A cinema in Acton coming to two screens near you is edging towards reality. A lease agreement has just been reached with Ealing Council.

Covid-19 put paid to Film-20 in hundreds of existing cinemas. So, a new kid on the block in the Old Library in the High Street has its work cut out.

But the Acton Arts Project, with £115k raised locally and hundreds of core supporters, has made the best use of the time. After the bid for a two-screen cinema and cafe-bar was green-lit by Ealing Council a year ago, the Borough's planners finally gave it the thumbs-up in September.

A record number of residents responded keenly on Ealing's Planning portal, and more than twice as many have echoed that at [www.actonartsproject.com](http://www.actonartsproject.com).

Three major vaccines against the virus are now on the horizon, and

there's a real prospect too of blockbuster film releases in the Spring. That said, the way we live, work and enjoy ourselves may well have changed, but that helps the Acton cinema plan too.

While the West End may have to wait for confidence in public transport to return, the future is local. Acton fits the profile of 'the 15-minute city', where a quarter-hour's walk or journey will be the best way to experience the enjoyment of cinema.

Work can begin in January on a 'meanwhile' solution of a pop-up single-screen cinema with local traders running the cafe-bar.

The venue will have socially distanced seating and be Covid-compliant from the off.

The pop-up will be operated by Oliver Meek, who has been over the course impressively as the chief exec of the Rio Cinema in

Dalston. Four days a week screenings will ease us down the road, until Pfizer, Moderna, Oxford and the rest begin to make all our lives easier longer term.

A second Spacehive campaign will target buying the equipment needed to safely get films on screen and bottoms on seats.

The cinema is Acton's shot in the arm, a step towards regeneration of the High Street and a celebration of where we live.

To find out how we can all help make this happen, take a look at the website ([www.actonartsproject.com](http://www.actonartsproject.com)), where the project's AGM, which was held on Zoom on Thursday 26th November, will be posted.

Film-lovers of Acton unite! You have nothing to lose but your chain cinemas.

## Christmas and January Walks

Maureen Colledge

With a Christmas party ruled out this year, the CCA has scheduled two guided walks, to go ahead if Covid restrictions allow. This will be confirmed by email, or by calling/texting me on 07963 909814 nearer the dates.

**Both walks:** Meet 1.30 in Acton Park by Ark Byron School:

### 1) Sunday 20 December:

A circular walk to Gunnersbury Park on mostly quiet roads to the park; then through the gardens to the house, where there may be drinks and toilets available.

We return by a slightly shorter route to Acton Park. It's about 4 miles in total, or 2.5 miles by taking a bus to Acton from Gunnersbury. Finish about 4pm

### 2) Sunday 24 January:

A circular walk to Ravenscourt Park, going south of The Vale, through local streets and Wendell Park, to Ravenscourt Park. Possible drinks and toilets. Then back through Bedford Park.

About 3.7 miles, with option of a shorter 2 mile walk by taking a bus back from Ravenscourt Park.

### ACTON HISTORY GROUP

[www.actonhistory.co.uk/acton/](http://www.actonhistory.co.uk/acton/)

Details: David Bays

020 8992 0287; 07952839653

Free to members; non-members: £2  
(Membership £10 a year)

All meetings: 7.30pm, by Zoom.

Details will be circulated to AHG members;  
non-members please contact:  
[info@actonhistory.co.uk](mailto:info@actonhistory.co.uk)

#### ◆ Celebrating the Light:

Talk by Nigel Middlemass about his book on the history of Mill Hill Park  
Wednesday 9 December

#### ◆ Speaker and arrangements for:

Wednesdays 13 January, 10 February and 10 March 2021. All at 7.30 pm.

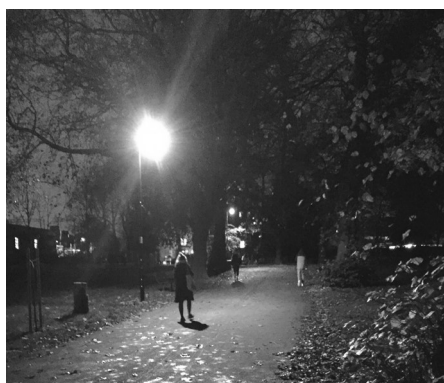
To be circulated to members. Non-members please contact: [info@actonhistory.co.uk](mailto:info@actonhistory.co.uk)

## Improved lighting in Acton Park as nights draw in

David Wootton

The eight lamp posts installed between Churchfield Road East and the Uxbridge Road in the Spring of 2020 (funded by East Acton Ward Forum money) are now fully operational.

Since the nights have drawn in, they are providing improved light for parents on the school 'drop off' and 'pick up' at Ark Byron.



They also benefit commuter access between Acton Central Station and bus services along the Uxbridge Road.

The lights are programmed to go off at the same time as the skateboard park closes in the evening during the winter.

# Low Traffic Neighbourhoods : alienating communities?

## Two opposing local views

We recognise that there are strong feelings among the membership for and against the LTN25 trial, and have invited two members with different views to put them forward as food for thought.

\*\*\*\*\*



LTN, looking north up Goldsmith Avenue and St Dunstons

In theory a Low Traffic Neighbourhood (LTN) is a great idea: ending rat runs and encouraging exercise. Some, such as around Bowes Road, serve residents and are popular.

But the problem with LTN25 north of Churchfield Road is that it doesn't help residents, is far too big, creates major problems as there is only one way in or out, and inhibits access to Churchfield Road and Acton centre.

The design is flawed, with all traffic concentrated on Grafton Road, Messaline Avenue and Emanuel Avenue, with increased congestion and obstruction.

No-one can get in or out if Grafton Road is blocked. Traffic is forced along Horn Lane where residents are facing much more congestion and pollution.

The old and disabled suffer: they can't bike or walk. Their carers are delayed. Emergency access is slowed; local shops and tradesmen harmed.

Life is hard under Covid. The LTN makes it harder.

\*\*\*\*\*

I live in Poets Corner and am in favour of the LTN, not only because I am directly affected by it since there is much less traffic in our road. But also because I believe it is the right thing to do.

I think the through traffic, built up over the last few years, needs to be redirected into the actual through roads where it belongs.

Yes, as a driver, this personally inconveniences me, with longer journeys stuck in traffic. But as a resident, I very much welcome it.

The alternative is to allow ever-growing traffic to be directed through small residential roads badly affecting residents, cyclists and pedestrians alike.

The essential point of the LTN is to facilitate a more cohesive community, focussing on the collective rather than individual needs.

Safer roads, happier residents, lower pollution, calmer streets, more walking and cycling. The price for me is to use my car less and put up with longer journeys.

Bring it on!

## Susanne Hickmott



Susanne at the CCA Summer Party 2018

We were very sad to hear that Susanne died recently after a protracted illness. She is warmly remembered by those of us who knew her as a friend, neighbour and CCA member.

After moving to Acton from Chiswick some twenty years ago, Susanne enjoyed the down-to-earthness and community spirit of the Actonians she met here.

Her friendly smile and willingness to get involved with local activities were infectious.

An early member of the CCA, Susanne was keen to make things happen. She led on Churchfield Road's 'Car Free Days' and was preparing for the borough-wide event deferred to 2021. Susanne served on the CCA Exec, including as secretary, for many years.

As a major contributor to the CCA newsletter, Susanne was passionate about our community and about bringing people together. It was her idea to run a series of pieces profiling local businesses, charities, and people in and around Churchfield Road.

She also took on the responsibility of the behind-the-scenes co-ordinating of the newsletter distribution.

A cheerful kindly presence in our neighbourhood, Susanne made it her business to 'get involved'.

We will all miss her greatly.

**The newsletter of the  
Churchfield Community  
Association (CCA) Issue 51,  
Winter 2020**

To contact the CCA secretary:  
Email: [hello@churchfield.org](mailto:hello@churchfield.org)  
Website: [www.churchfield.org](http://www.churchfield.org)

**JOIN THE CCA**

- ◆ Vote at meetings
- ◆ Receive invitations to members' events
- ◆ Join the CCA email group

**Annual Membership fee (Standing orders only)**

**Single/Business – £5 (£2 concessions)**

**Household – £7.50**

➤➤ **Keep an eye on the CCA website [www.churchfield.org](http://www.churchfield.org)** ➤➤

## Highlights from the CCA Annual Report

Chris Hurley

What a strange year 2020 has turned out to be! Due to Covid, many of our events and activities have sadly had to be cancelled or curtailed.

I want to thank all those who serve on the Executive. We welcomed Paul Webster as the representative from CAN Forum. Sadly, Annie Evans had to step down, but we are happy that Susi Kirkwood is staying on to organise our social activities.

I particularly want to pay tribute to Susanne Hickmott who sadly died this year following a long illness. Susanne had been a stalwart member of the Executive for many years.

We managed to continue with some activities, including a campaign to save the restaurant L'Oriental, licencing applications, and even a few social events.

Thanks to Paul and Phillippe for hosting weekly quizzes during

the first lockdown which was a highlight of the week for many members.

One new activity, which we plan to repeat, was a guided walk by our secretary Maureen Colledge, through places of interest in Acton and around.

We hope that the virus is under control in 2021, so that we can live our lives as normal again, with lots more opportunities for members to get together.

## Covid community action

Maureen Colledge



During lockdown, Ealing Council set up task groups across the borough to reinforce key messages and provide support.

The CCA is part of the Acton task group and has shared messages via our email group and on our poster board.

Ealing has one of the highest rates of Covid cases in London.

If anyone in your household develops symptoms, stay in and get them tested, either online or by calling 119. Key symptoms are: high temperature, continuous cough, loss of taste/smell.

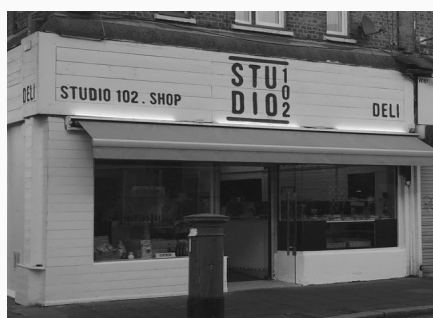
If someone needs support because they have been told to self-isolate, are shielding or are worried about how they will source food or essentials, they can call Ealing Together on 020 8825 7170.

**Remember: Hands Face Space!**

## New on Churchfield Road

David Wootton

The deli 'Studio 102', which has opened on Churchfield Road, brings the shop full circle back to a deli that many of us will remember as Lehanes.



'Woodworking and Joinery' is now doing business adjacent to Acton Central Station. This site was previously occupied by the Bicycle Repair Shop.